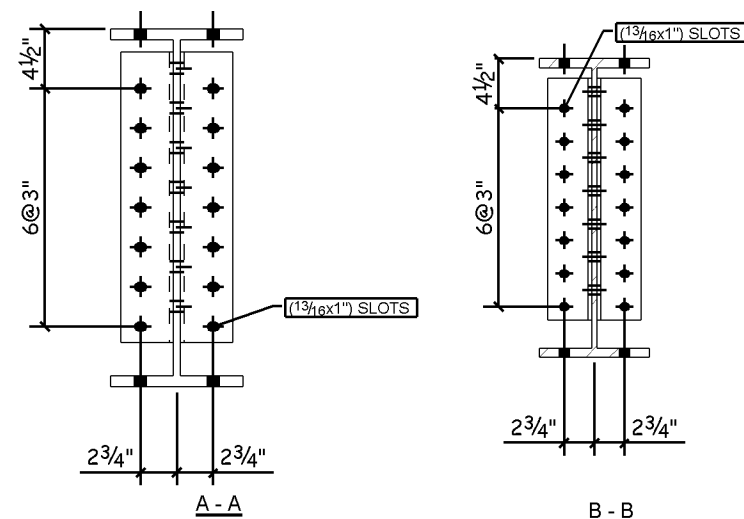
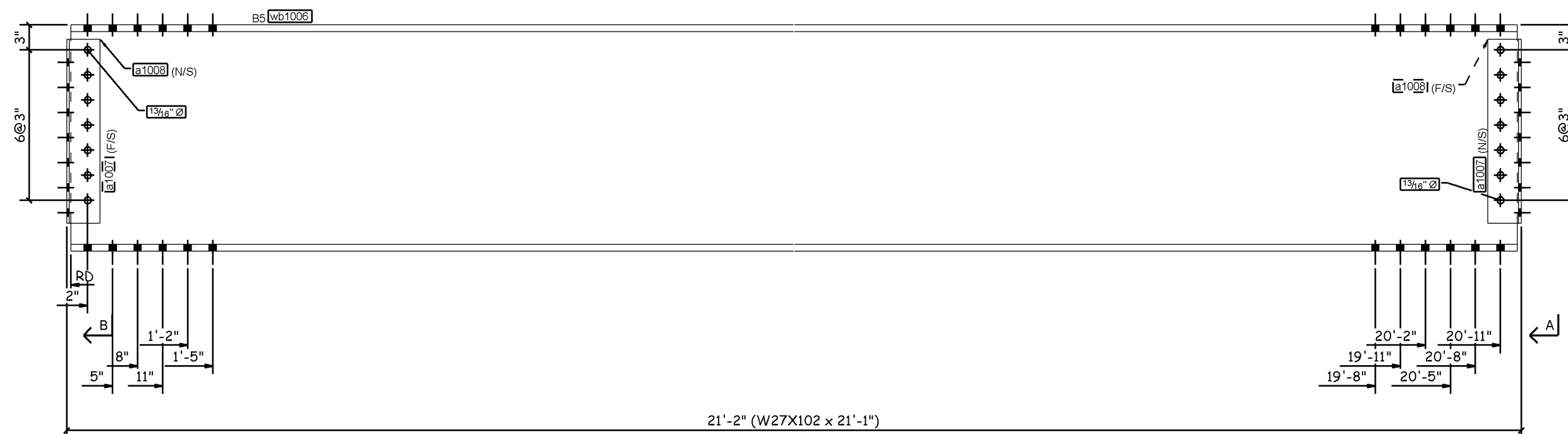
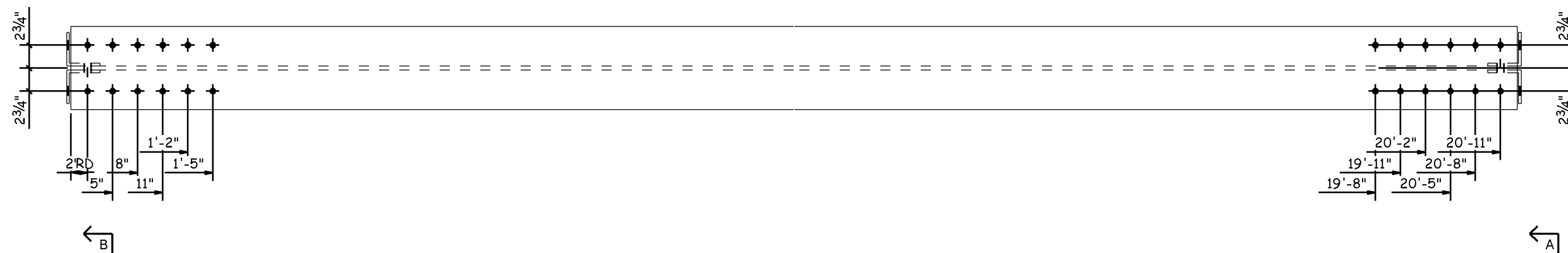


TOTAL QTY	PER ASSEMB	SHOP BOLTS	LENGTH
14	14	BOLT 3/4"DIA A325 TC	2 1/4"



LOAD #	QTY
TOTAL	1

BEAM REQ'D AS DRAWN MK B5
 CAMBER REQUIRED = 0'-1" RADIUS = No. of Studs = 30

MATERIAL LIST FOR EACH ASSEMBLY MK'D B5							1		Total No. of Assemblies Req'd	
Part Mark	Stock	Grade	No.	Length	Area (in ²)	Weight (lbs)				
wb1006	W27X102	A992	1	21'-1"	23650.3	2105	EA			
a1007	L4X4X5/16	A36	2	1'-10"	356.8	15	EA			
a1008	L4X4X5/16	A36	2	1'-10"	356.8	15	EA			
Total per assembly						25077.5	2165			

2165 LBS.

TOTAL WEIGHT FOR ALL ASSEMBLIES

FAB INSPECTOR:

FITTED BY:

WELDED BY:

FAB DATE:

GENERAL NOTES:

WELDS: E71T-1

STD HOLES: 13/16 DIA UNO

SHOP BOLTS: 3/4 A325N SNUG TIGHT

SURFACE PREP: SSPC-SP10

PRIME PAINT: ZINC RICH PRIMER

INTERMEDIATE PAINT: ALKYD ENAMEL

FINISH PAINT:

0	JRS	3-4-09	APPROVED FOR FABRICATION	
REV	BY	DATE	DESCRIPTION	REMARKS / STATUS

JPW STRUCTURAL CONTRACTING, INC.

6376 THOMPSON ROAD PHONE: 315-432-1111 A.I.S.C. CERTIFIED

SYRACUSE, NY 13206 FAX: 315-431-9692 STD. FOR STEEL BLDG. STRUCTURES

PROJECT NAME: SAMPLE BEAM LOCATION: SYRACUSE, NY

CUSTOMER: CUSTOMER

ARCHITECT: PROJ ARCHITECT ENGINEER: ENGINEER

DATE: 3-4-09 CHECKED BY: JEU DESCRIPTION: BEAM DWG #: B5

ISSUE DATE: 03/06/2009

P.O.# 4500

0